

MONTHLY MEMBERSHIP PROGRESS REPORT

LOCATION PENNSYLVANIA

District 14 U

Results as of: 6/30/2022

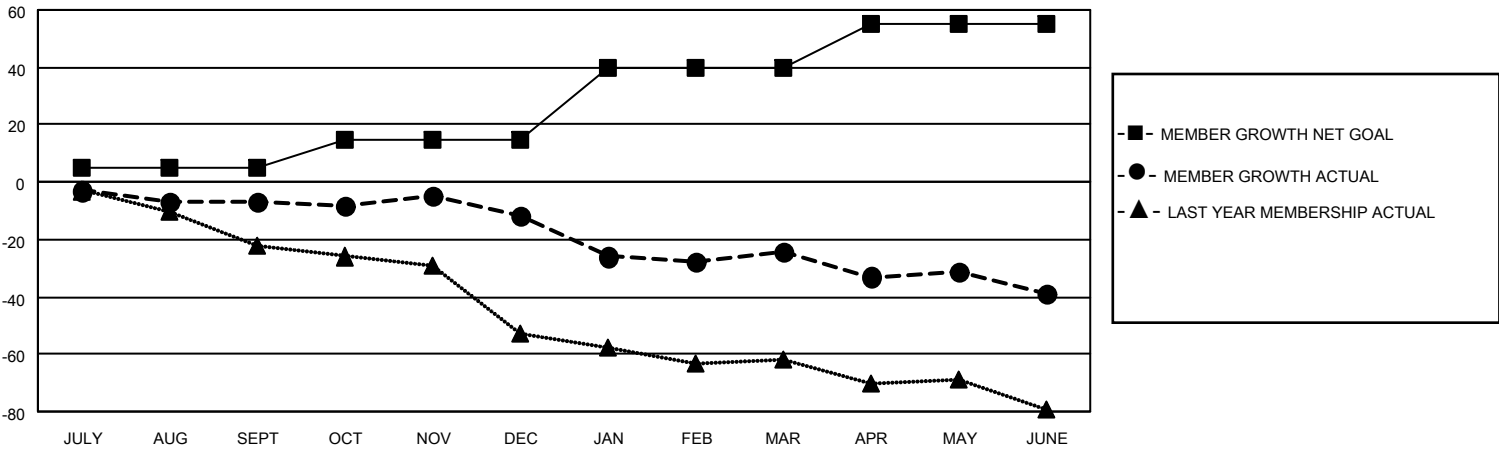
Clubs			
RESULTS FOR 2021-2022			
QUARTER	NEW CLUB GOAL	NEW CLUBS	DROPPED CLUBS
JULY/AUG/SEPT	1	0	0
OCT/NOV/DEC	0	0	0
JAN/FEB/MAR	1	0	0
APR/MAY/JUNE	0	0	1

Members			
RESULTS FOR 2021-2022			
QUARTER	MEMBER GROWTH NET GOAL	MEMBER GROWTH ACTUAL	DROPPED MEMBERS ACTUAL (including transfers)
JULY/AUG/SEPT	5	37	27
OCT/NOV/DEC	10	16	19
JAN/FEB/MAR	25	29	39
APR/MAY/JUNE	15	30	45

GOALS AND ACTUAL NEW CLUBS CUMULATIVE



GOALS AND ACTUAL MEMBERS CUMULATIVE



DROPPED CLUBS: 1

22 CLUBS OF 31 ADDED 1 OR MORE NEW MEMBERS

GENDER DISTRIBUTION

MALE	592 (66.52%)
FEMALE	298 (33.48%)
NON BINARY	0 (0.00%)
PREFER NOT TO ANSWER	0 (0.00%)

DROPPED MEMBERS

[CLICK HERE FOR CUMULATIVE MEMBERSHIP DATA](#)

DECEASED	22
CLUB CANCELLED	28
OTHER	79
TOTAL	129

TOTAL FAMILY UNIT MEMBERS 199

FAMILY MEMBERS PAYING HALF DUES 101